

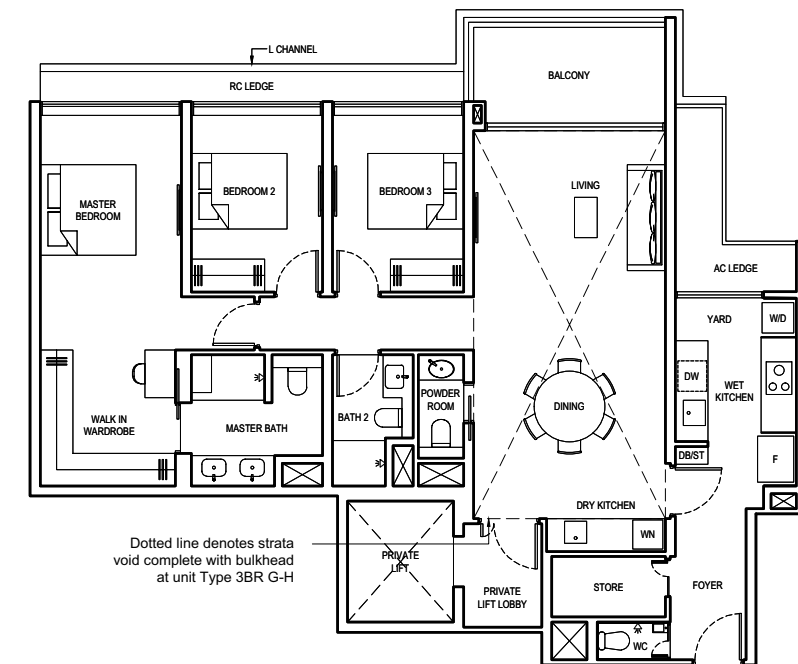
3 BEDROOM (GRAND)

TYPE 3BR G

137 SQM / 1475 SQFT
 (INCLUSIVE OF 9 SQM BALCONY,
 6 SQM AC LEDGE &
 3 SQM PRIVATE LIFT LOBBY)
 BLOCK 2 #03-03 to #17-03
 #03-06 to #17-06 (mirrored)

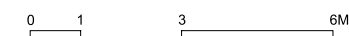
TYPE 3BR G-H

169 SQM / 1819 SQFT
 (INCLUSIVE OF 9 SQM BALCONY,
 6 SQM AC LEDGE,
 3 SQM PRIVATE LIFT LOBBY &
 32 SQM STRATA VOID)
 BLOCK 2 #18-03
 #18-06 (mirrored)

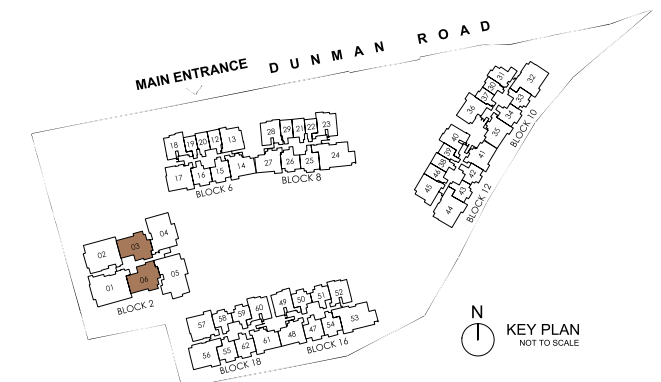


LEGEND:

- F FRIDGE
- W/D WASHER AND DRYER
- DB DISTRIBUTION BOARD
- ST STORE
- WC WATER CLOSET
- WN WINE CHILLER
- DW DISHWASHER
- AC AIR-CONDITIONER
- RC REINFORCED CONCRETE (EXCLUDED FROM STRATA AREA)
- ☒ VOID SPACE (EXCLUDED FROM STRATA AREA)



ALL PLANS ARE SUBJECT TO CHANGES BY THE RELEVANT AUTHORITIES.
 MEASUREMENTS ARE APPROXIMATE ONLY AND SUBJECT TO FINAL SURVEY.
 INFORMATION ACCURATE AT POINT OF PRINTING.
 BP NO.: A1716-00003-2022-BP01 DATED 15 MAY 2023



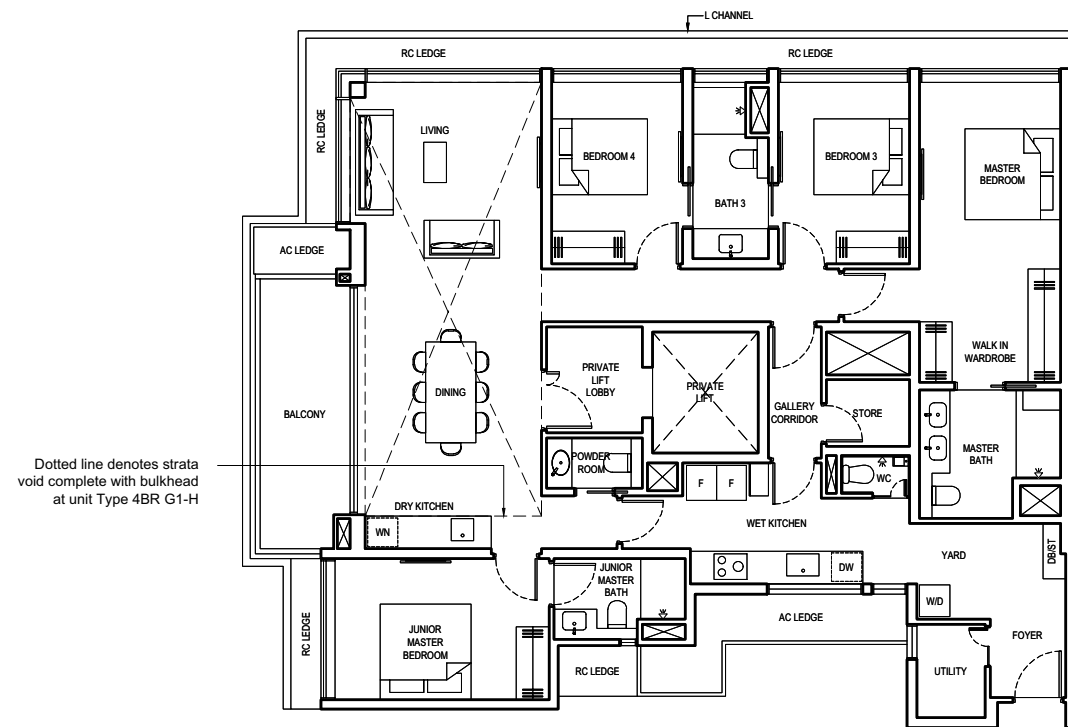
4 BEDROOM (GRAND)

TYPE 4BR G1

179 SQM / 1927 SQFT
(INCLUSIVE OF 11 SQM BALCONY,
9 SQM AC LEDGE &
5 SQM PRIVATE LIFT LOBBY)
BLOCK 2 #03-02 to #17-02

TYPE 4BR G1-H

215 SQM / 2314 SQFT
(INCLUSIVE OF 11 SQM BALCONY,
9 SQM AC LEDGE,
5 SQM PRIVATE LIFT LOBBY &
36 SQM STRATA VOID)
BLOCK 2 #18-02



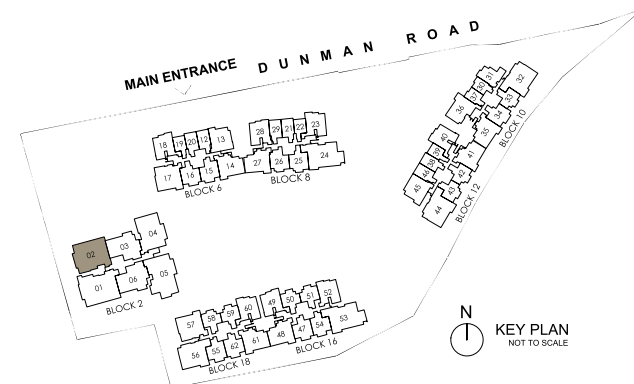
Dotted line denotes strata void complete with bulkhead at unit Type 4BR G1-H

LEGEND:

- F FRIDGE
- W/D WASHER AND DRYER
- DB DISTRIBUTION BOARD
- ST STORE
- WC WATER CLOSET
- WN WINE CHILLER
- DW DISHWASHER
- AC AIR-CONDITIONER
- RC REINFORCED CONCRETE (EXCLUDED FROM STRATA AREA)
- ☒ VOID SPACE (EXCLUDED FROM STRATA AREA)

0 1 3 6M

ALL PLANS ARE SUBJECT TO CHANGES BY THE RELEVANT AUTHORITIES. MEASUREMENTS ARE APPROXIMATE ONLY AND SUBJECT TO FINAL SURVEY. INFORMATION ACCURATE AT POINT OF PRINTING. BP NO.: A1716-00003-2022-BP01 DATED 15 MAY 2023



4 BEDROOM (GRAND)

TYPE 4BR G2-PES

166 SQM / 1787 SQFT
(INCLUSIVE OF 15 SQM PES,
7 SQM AC LEDGE &
4 SQM PRIVATE LIFT LOBBY)
BLOCK 2 #01-04

TYPE 4BR G2

166 SQM / 1787 SQFT
(INCLUSIVE OF 15 SQM BALCONY,
7 SQM AC LEDGE &
4 SQM PRIVATE LIFT LOBBY)
BLOCK 2 #02-04 to #17-04

TYPE 4BR G2-H

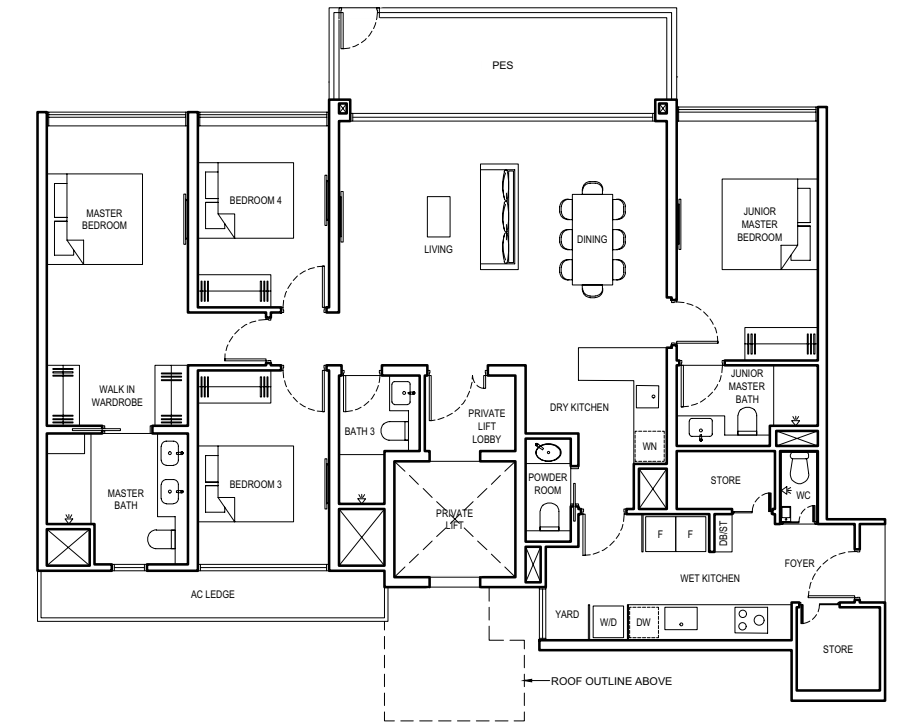
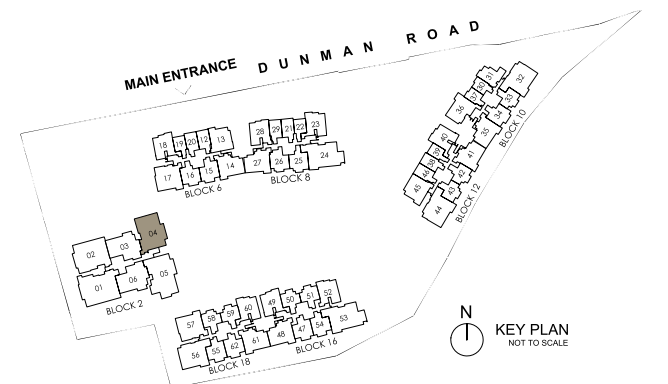
200 SQM / 2153 SQFT
(INCLUSIVE OF 15 SQM BALCONY,
7 SQM AC LEDGE,
4 SQM PRIVATE LIFT LOBBY &
34 SQM STRATA VOID)
BLOCK 2 #18-04

LEGEND:

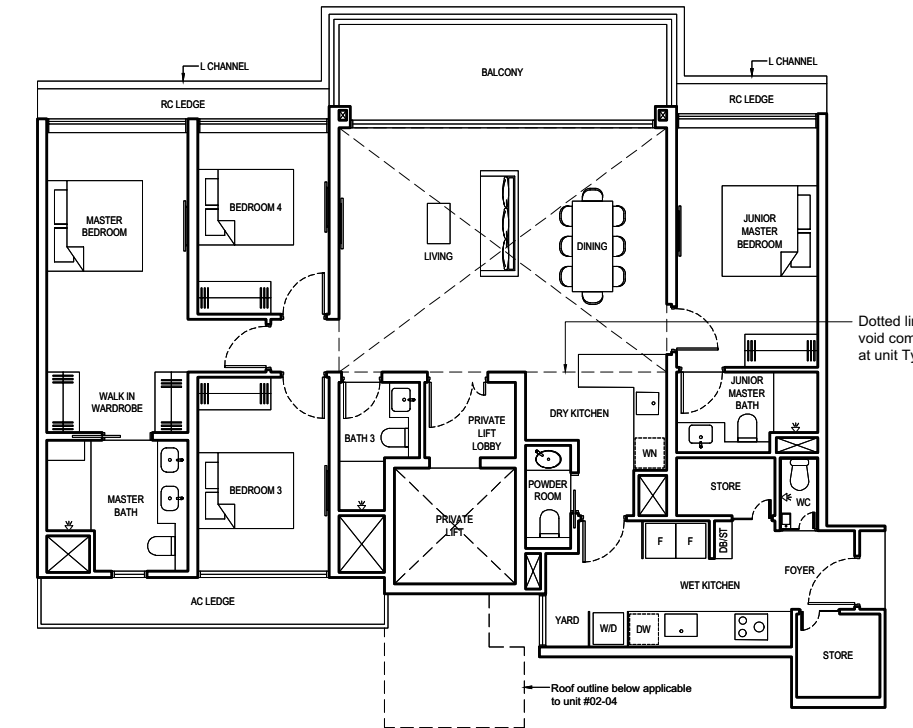
- F FRIDGE
- W/D WASHER AND DRYER
- DB DISTRIBUTION BOARD
- ST STORE
- WC WATER CLOSET
- WN WINE CHILLER
- DW DISHWASHER
- AC AIR-CONDITIONER
- RC REINFORCED CONCRETE (EXCLUDED FROM STRATA AREA)
- ☒ VOID SPACE (EXCLUDED FROM STRATA AREA)

0 1 3 6M

ALL PLANS ARE SUBJECT TO CHANGES BY THE RELEVANT AUTHORITIES. MEASUREMENTS ARE APPROXIMATE ONLY AND SUBJECT TO FINAL SURVEY. INFORMATION ACCURATE AT POINT OF PRINTING. BP NO.: A1716-00003-2022-BP01 DATED 15 MAY 2023



ROOF OUTLINE ABOVE



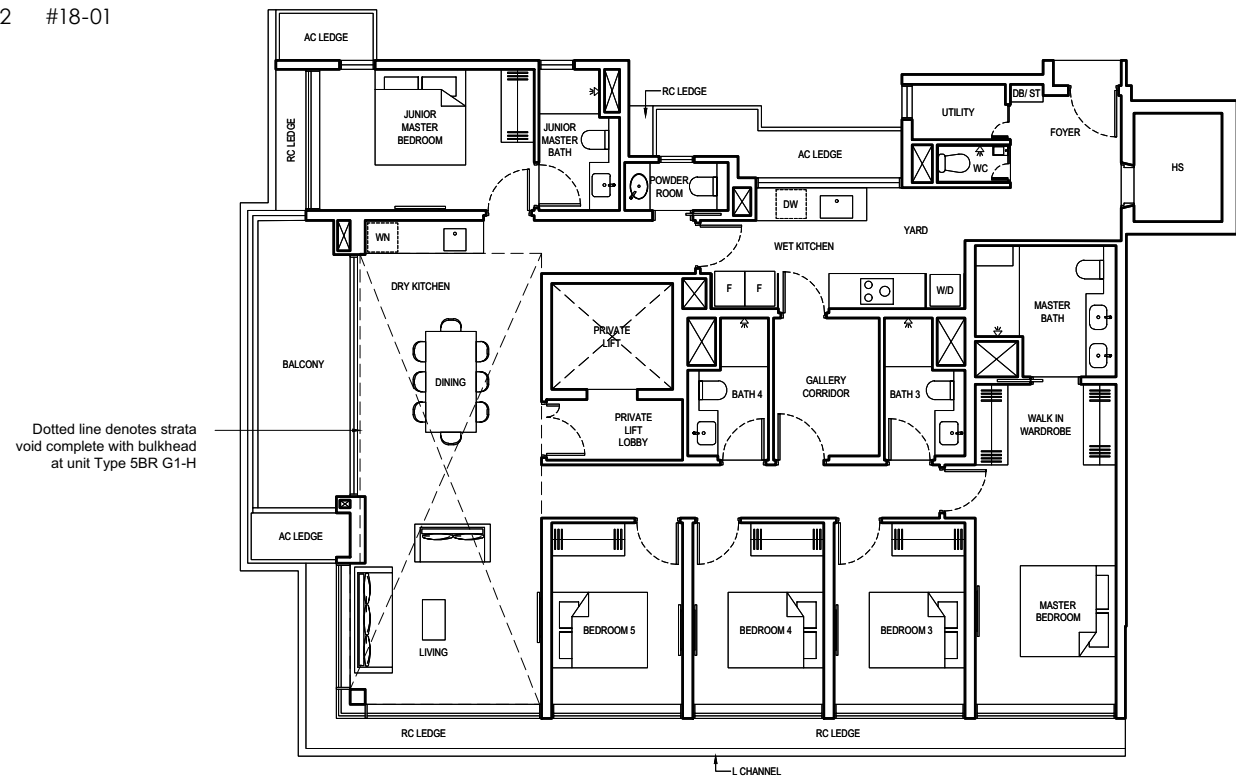
Dotted line denotes strata void complete with bulkhead at unit Type 4BR G2-H

Roof outline below applicable to unit #02-04

5 BEDROOM (GRAND)

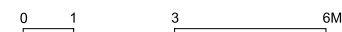
TYPE 5BR G1
206 SQM / 2217 SQFT
(INCLUSIVE OF 12 SQM BALCONY,
10 SQM AC LEDGE &
4 SQM PRIVATE LIFT LOBBY)
BLOCK 2 #03-01 to #17-01

TYPE 5BR G1-H
243 SQM / 2615 SQFT
(INCLUSIVE OF 12 SQM BALCONY,
10 SQM AC LEDGE,
4 SQM PRIVATE LIFT LOBBY &
37 SQM STRATA VOID)
BLOCK 2 #18-01

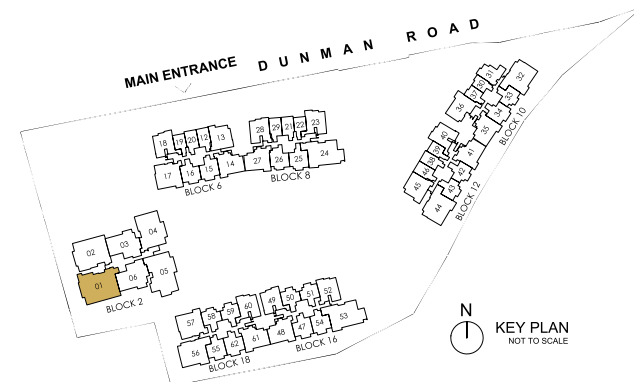


Dotted line denotes strata void complete with bulkhead at unit Type 5BR G1-H

- LEGEND:
- F FRIDGE
 - W/D WASHER AND DRYER
 - DB DISTRIBUTION BOARD
 - ST STORE
 - WC WATER CLOSET
 - HS HOUSEHOLD SHELTER
 - WN WINE CHILLER
 - DW DISHWASHER
 - AC AIR-CONDITIONER
 - RC REINFORCED CONCRETE (EXCLUDED FROM STRATA AREA)
 - ☒ VOID SPACE (EXCLUDED FROM STRATA AREA)

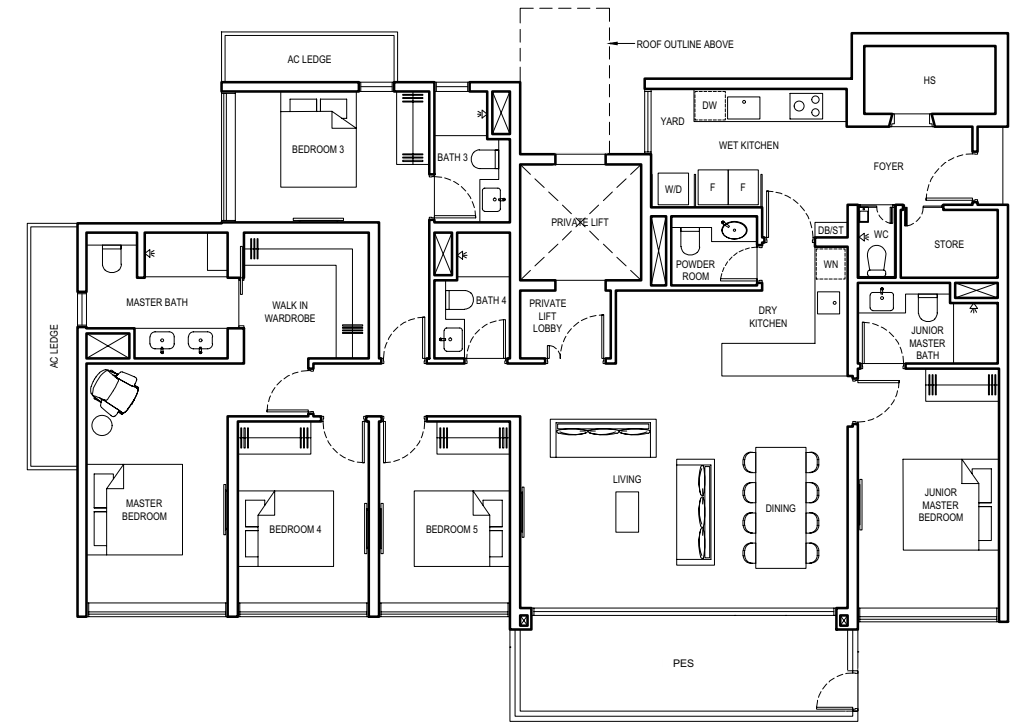


ALL PLANS ARE SUBJECT TO CHANGES BY THE RELEVANT AUTHORITIES. MEASUREMENTS ARE APPROXIMATE ONLY AND SUBJECT TO FINAL SURVEY. INFORMATION ACCURATE AT POINT OF PRINTING. BP NO.: A1716-00003-2022-BP01 DATED 15 MAY 2023



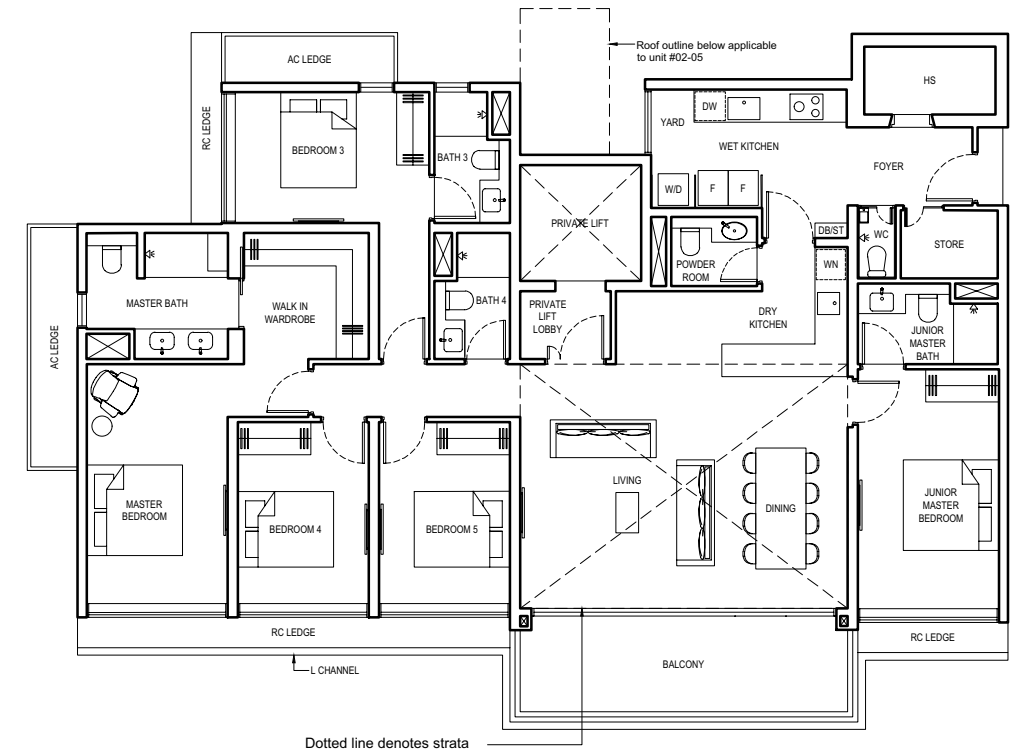
5 BEDROOM (GRAND)

TYPE 5BR G2-PES
198 SQM / 2131 SQFT
(INCLUSIVE OF 15 SQM PES,
9 SQM AC LEDGE &
3 SQM PRIVATE LIFT LOBBY)
BLOCK 2 #01-05



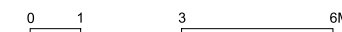
TYPE 5BR G2
198 SQM / 2131 SQFT
(INCLUSIVE OF 15 SQM BALCONY,
9 SQM AC LEDGE &
3 SQM PRIVATE LIFT LOBBY)
BLOCK 2 #02-05 to #17-05

TYPE 5BR G2-H
232 SQM / 2497 SQFT
(INCLUSIVE OF 15 SQM BALCONY,
9 SQM AC LEDGE,
3 SQM PRIVATE LIFT LOBBY &
34 SQM STRATA VOID)
BLOCK 2 #18-05

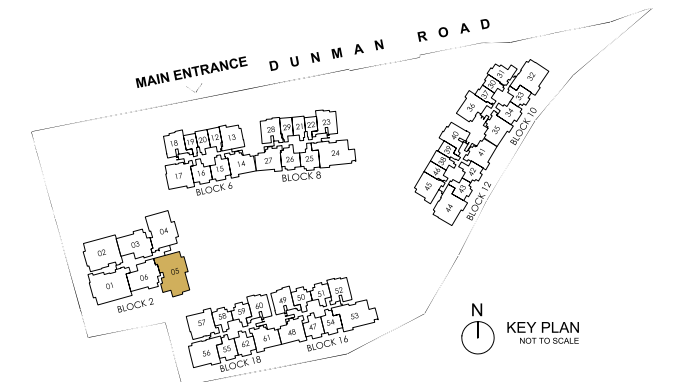


Dotted line denotes strata void complete with bulkhead at unit Type 5BR G2-H

- LEGEND:
- F FRIDGE
 - W/D WASHER AND DRYER
 - DB DISTRIBUTION BOARD
 - ST STORE
 - WC WATER CLOSET
 - HS HOUSEHOLD SHELTER
 - WN WINE CHILLER
 - DW DISHWASHER
 - AC AIR-CONDITIONER
 - RC REINFORCED CONCRETE (EXCLUDED FROM STRATA AREA)
 - ☒ VOID SPACE (EXCLUDED FROM STRATA AREA)



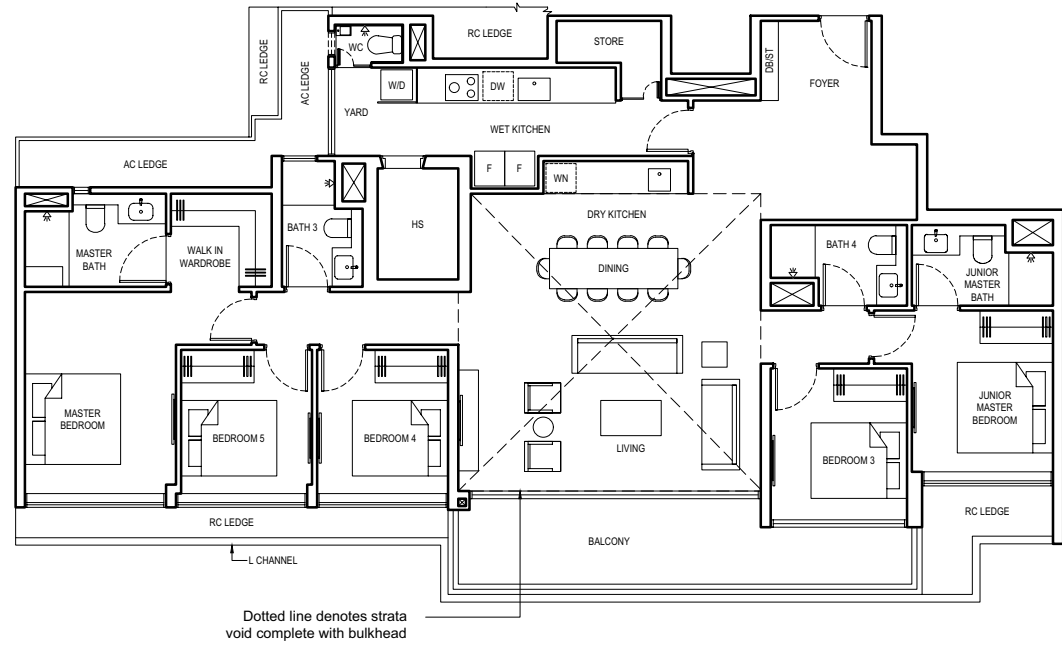
ALL PLANS ARE SUBJECT TO CHANGES BY THE RELEVANT AUTHORITIES. MEASUREMENTS ARE APPROXIMATE ONLY AND SUBJECT TO FINAL SURVEY. INFORMATION ACCURATE AT POINT OF PRINTING. BP NO.: A1716-00003-2022-BP01 DATED 15 MAY 2023



PENTHOUSE (GRAND)

TYPE PH-1

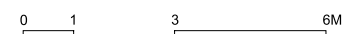
221 SQM / 2379 SQFT
(INCLUSIVE OF 16 SQM BALCONY,
9 SQM AC LEDGE &
38 SQM STRATA VOID)
BLOCK 10 #18-34



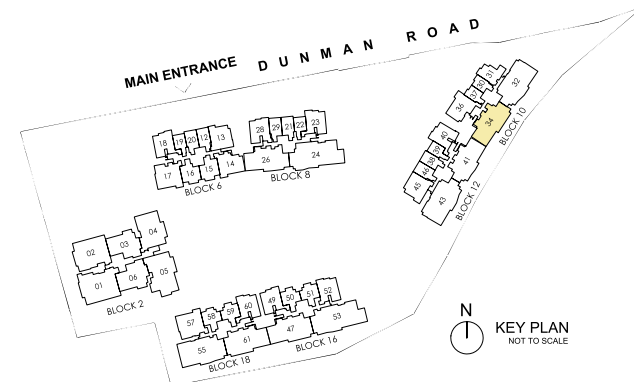
Dotted line denotes strata void complete with bulkhead

LEGEND:

- F FRIDGE
- W/D WASHER AND DRYER
- DB DISTRIBUTION BOARD
- ST STORE
- WC WATER CLOSET
- HS HOUSEHOLD SHELTER
- WN WINE CHILLER
- DW DISHWASHER
- AC AIR-CONDITIONER
- RC REINFORCED CONCRETE (EXCLUDED FROM STRATA AREA)
- ☒ VOID SPACE (EXCLUDED FROM STRATA AREA)



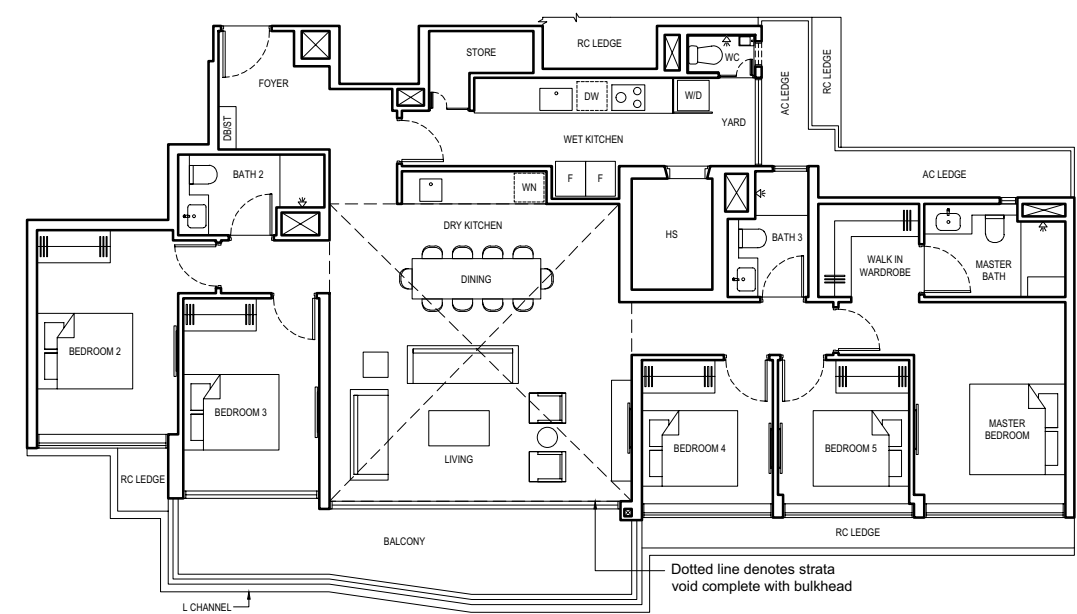
ALL PLANS ARE SUBJECT TO CHANGES BY THE RELEVANT AUTHORITIES.
MEASUREMENTS ARE APPROXIMATE ONLY AND SUBJECT TO FINAL SURVEY.
INFORMATION ACCURATE AT POINT OF PRINTING.
BP NO.: A1716-00003-2022-BP01 DATED 15 MAY 2023



PENTHOUSE (GRAND)

TYPE PH-2

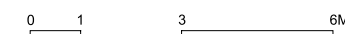
217 SQM / 2336 SQFT
(INCLUSIVE OF 17 SQM BALCONY,
9 SQM AC LEDGE &
38 SQM STRATA VOID)
BLOCK 12 #18-41



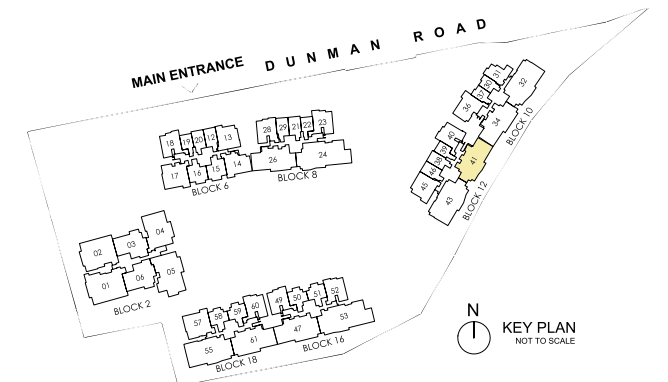
Dotted line denotes strata void complete with bulkhead

LEGEND:

- F FRIDGE
- W/D WASHER AND DRYER
- DB DISTRIBUTION BOARD
- ST STORE
- WC WATER CLOSET
- HS HOUSEHOLD SHELTER
- WN WINE CHILLER
- DW DISHWASHER
- AC AIR-CONDITIONER
- RC REINFORCED CONCRETE (EXCLUDED FROM STRATA AREA)
- ☒ VOID SPACE (EXCLUDED FROM STRATA AREA)



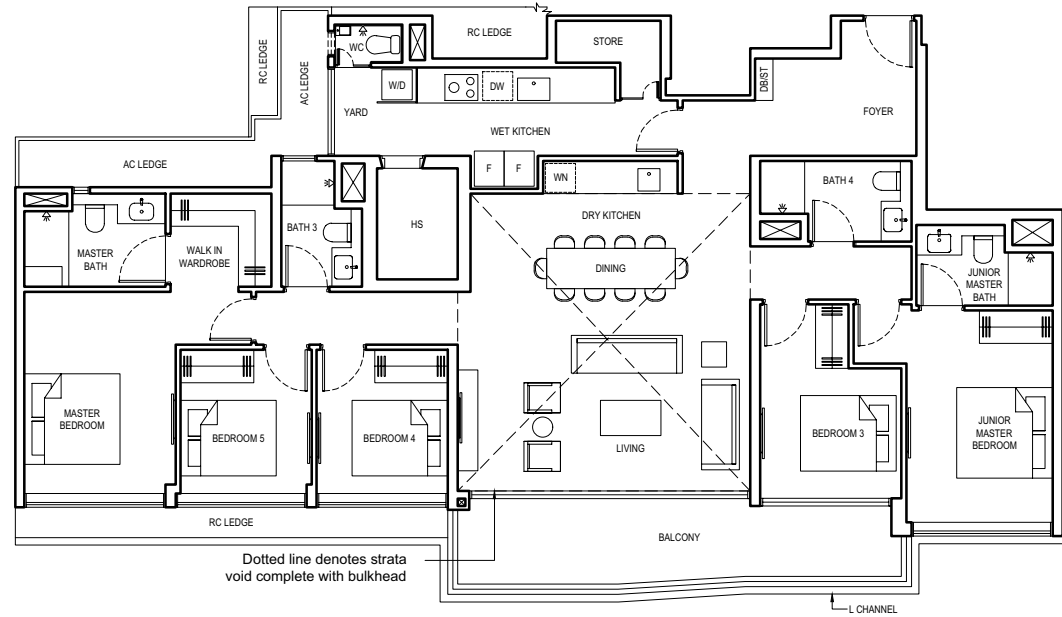
ALL PLANS ARE SUBJECT TO CHANGES BY THE RELEVANT AUTHORITIES.
MEASUREMENTS ARE APPROXIMATE ONLY AND SUBJECT TO FINAL SURVEY.
INFORMATION ACCURATE AT POINT OF PRINTING.
BP NO.: A1716-00003-2022-BP01 DATED 15 MAY 2023



PENTHOUSE (GRAND)

TYPE PH-3

222 SQM / 2390 SQFT
(INCLUSIVE OF 16 SQM BALCONY,
9 SQM AC LEDGE &
36 SQM STRATA VOID)
BLOCK 8 #18-26

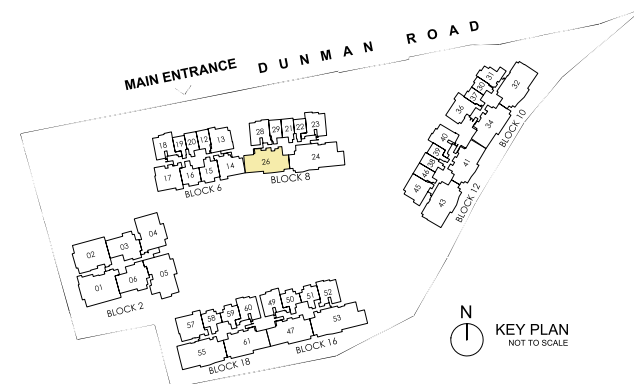


LEGEND:

- F FRIDGE
- W/D WASHER AND DRYER
- DB DISTRIBUTION BOARD
- ST STORE
- WC WATER CLOSET
- HS HOUSEHOLD SHELTER
- WN WINE CHILLER
- DW DISHWASHER
- AC AIR-CONDITIONER
- RC REINFORCED CONCRETE (EXCLUDED FROM STRATA AREA)
- ☒ VOID SPACE (EXCLUDED FROM STRATA AREA)

0 1 3 6M

ALL PLANS ARE SUBJECT TO CHANGES BY THE RELEVANT AUTHORITIES.
MEASUREMENTS ARE APPROXIMATE ONLY AND SUBJECT TO FINAL SURVEY.
INFORMATION ACCURATE AT POINT OF PRINTING.
BP NO.: A1716-00003-2022-BP01 DATED 15 MAY 2023

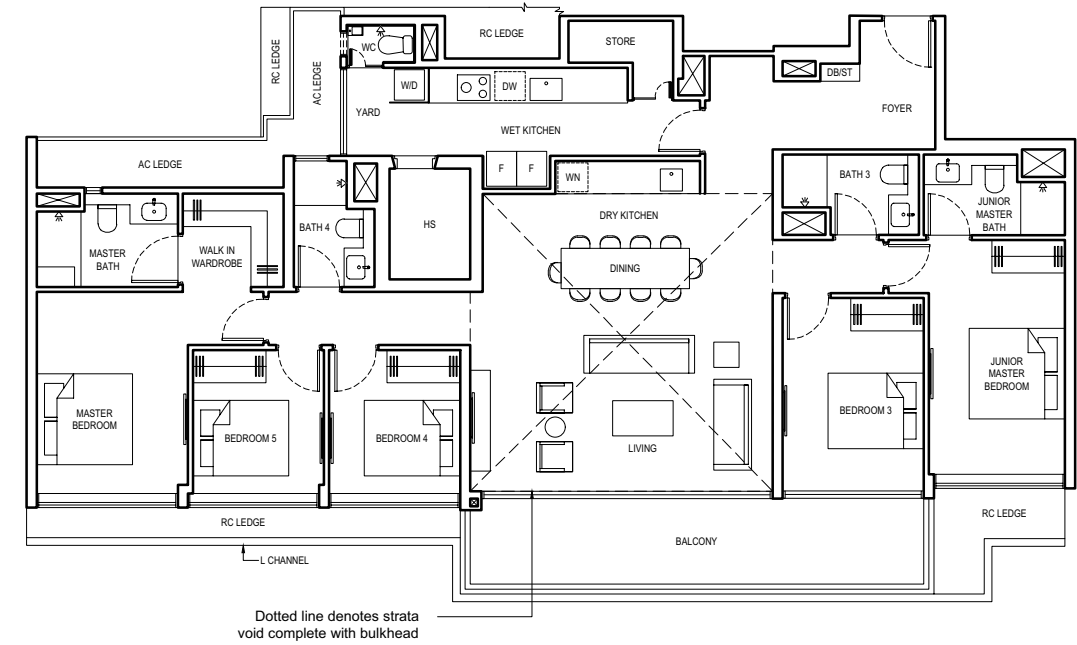


N
KEY PLAN
NOT TO SCALE

PENTHOUSE (GRAND)

TYPE PH-4

226 SQM / 2433 SQFT
(INCLUSIVE OF 18 SQM BALCONY,
9 SQM AC LEDGE &
38 SQM STRATA VOID)
BLOCK 16 #18-47
BLOCK 18 #18-61 (mirrored)

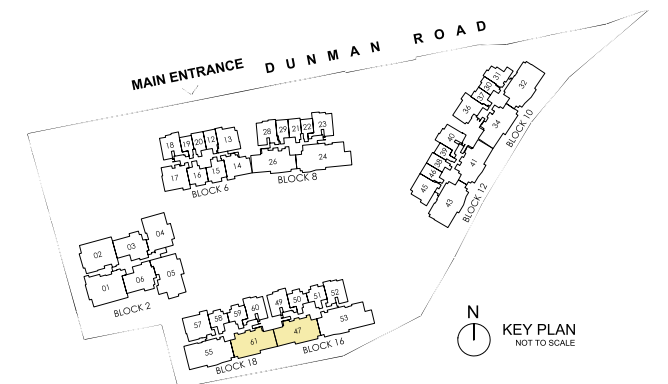


LEGEND:

- F FRIDGE
- W/D WASHER AND DRYER
- DB DISTRIBUTION BOARD
- ST STORE
- WC WATER CLOSET
- HS HOUSEHOLD SHELTER
- WN WINE CHILLER
- DW DISHWASHER
- AC AIR-CONDITIONER
- RC REINFORCED CONCRETE (EXCLUDED FROM STRATA AREA)
- ☒ VOID SPACE (EXCLUDED FROM STRATA AREA)

0 1 3 6M

ALL PLANS ARE SUBJECT TO CHANGES BY THE RELEVANT AUTHORITIES.
MEASUREMENTS ARE APPROXIMATE ONLY AND SUBJECT TO FINAL SURVEY.
INFORMATION ACCURATE AT POINT OF PRINTING.
BP NO.: A1716-00003-2022-BP01 DATED 15 MAY 2023

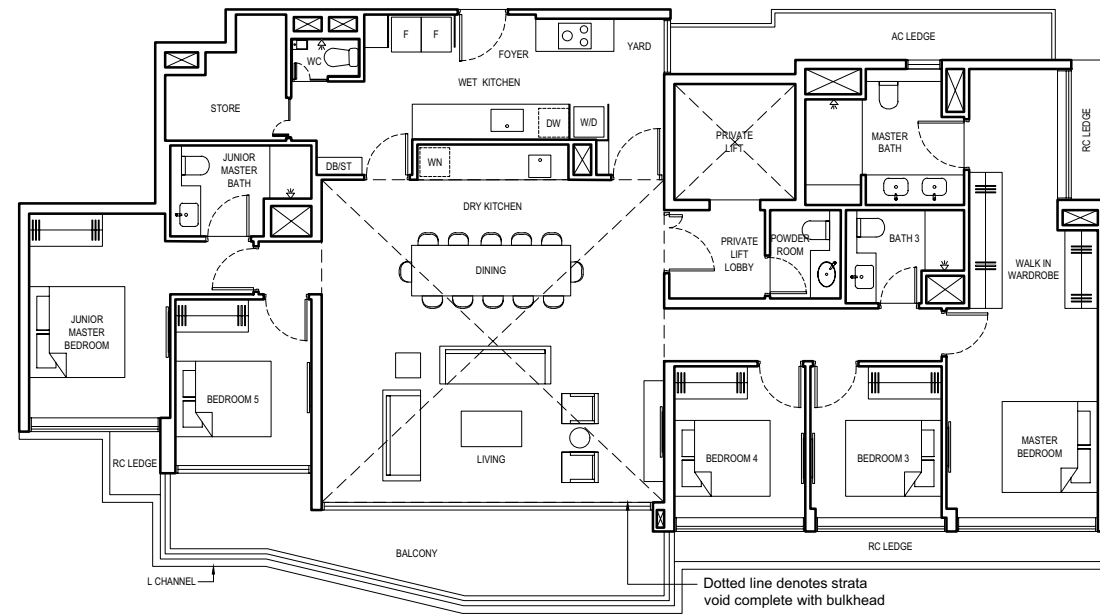


N
KEY PLAN
NOT TO SCALE

PENTHOUSE (GRAND)

TYPE PH-5

247 SQM / 2659 SQFT
(INCLUSIVE OF 18 SQM BALCONY,
9 SQM AC LEDGE,
3 SQM PRIVATE LIFT LOBBY &
46 SQM STRATA VOID)
BLOCK 10 #18-32
BLOCK 12 #18-43 (mirrored)

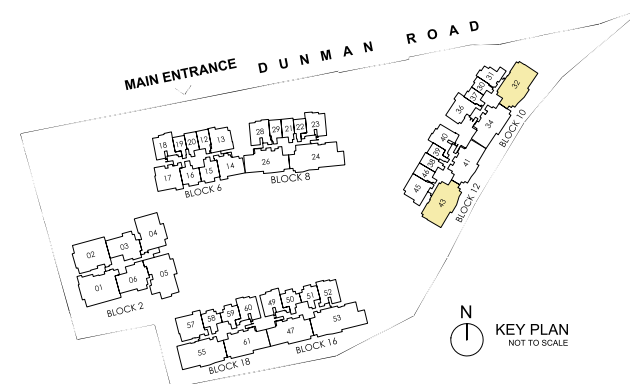


LEGEND:

- F FRIDGE
- W/D WASHER AND DRYER
- DB DISTRIBUTION BOARD
- ST STORE
- WC WATER CLOSET
- WN WINE CHILLER
- DW DISHWASHER
- AC AIR-CONDITIONER
- RC REINFORCED CONCRETE (EXCLUDED FROM STRATA AREA)
- ☒ VOID SPACE (EXCLUDED FROM STRATA AREA)

0 1 3 6M

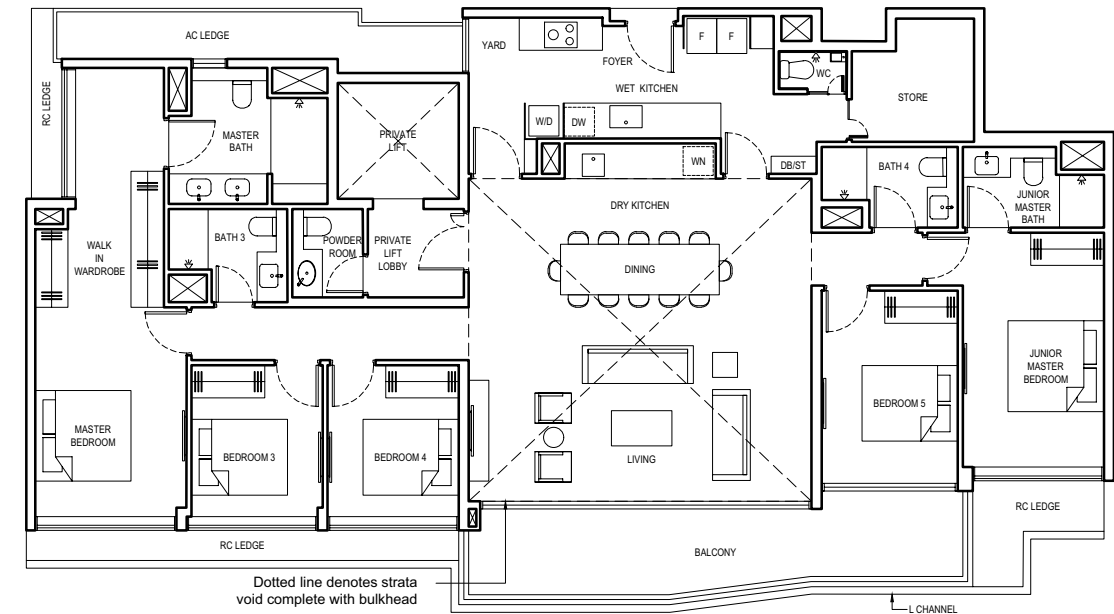
ALL PLANS ARE SUBJECT TO CHANGES BY THE RELEVANT AUTHORITIES.
MEASUREMENTS ARE APPROXIMATE ONLY AND SUBJECT TO FINAL SURVEY.
INFORMATION ACCURATE AT POINT OF PRINTING.
BP NO.: A1716-00003-2022-BP01 DATED 15 MAY 2023



PENTHOUSE (GRAND)

TYPE PH-6

256 SQM / 2756 SQFT
(INCLUSIVE OF 19 SQM BALCONY,
9 SQM AC LEDGE,
3 SQM PRIVATE LIFT LOBBY &
46 SQM STRATA VOID)
BLOCK 18 #18-55

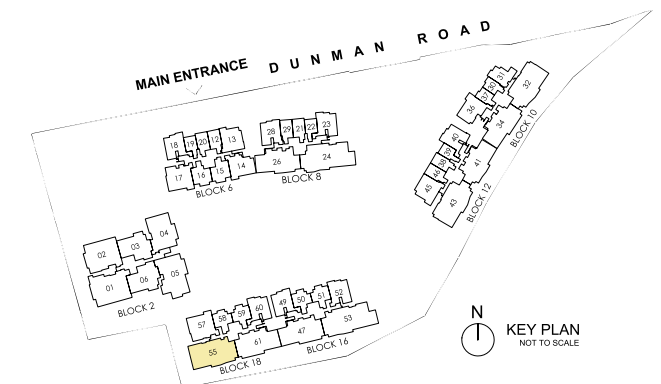


LEGEND:

- F FRIDGE
- W/D WASHER AND DRYER
- DB DISTRIBUTION BOARD
- ST STORE
- WC WATER CLOSET
- WN WINE CHILLER
- DW DISHWASHER
- AC AIR-CONDITIONER
- RC REINFORCED CONCRETE (EXCLUDED FROM STRATA AREA)
- ☒ VOID SPACE (EXCLUDED FROM STRATA AREA)

0 1 3 6M

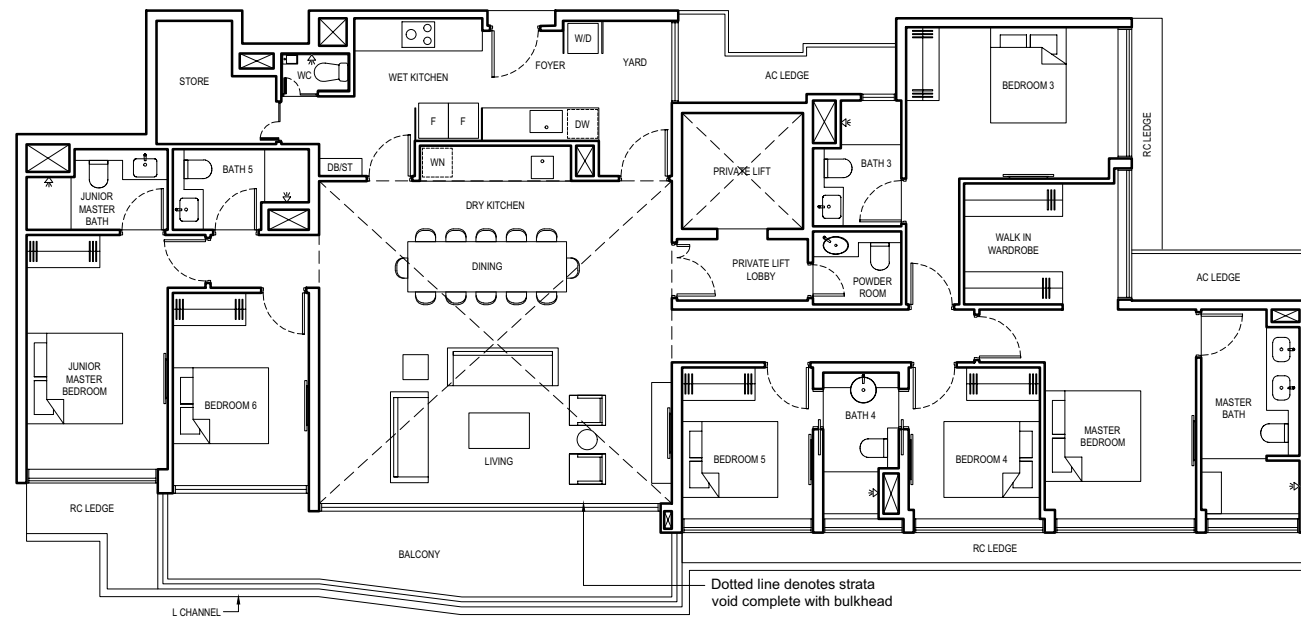
ALL PLANS ARE SUBJECT TO CHANGES BY THE RELEVANT AUTHORITIES.
MEASUREMENTS ARE APPROXIMATE ONLY AND SUBJECT TO FINAL SURVEY.
INFORMATION ACCURATE AT POINT OF PRINTING.
BP NO.: A1716-00003-2022-BP01 DATED 15 MAY 2023



PENTHOUSE (GRAND)

TYPE PH-7

284 SQM / 3057 SQFT
(INCLUSIVE OF 19 SQM BALCONY,
9 SQM AC LEDGE,
4 SQM PRIVATE LIFT LOBBY &
48 SQM STRATA VOID)
BLOCK 16 #18-53

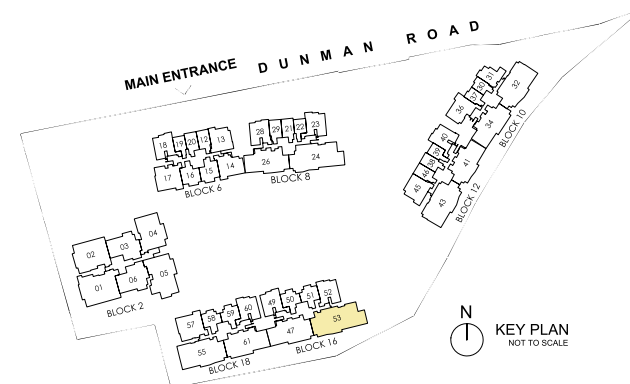


LEGEND:

- F FRIDGE
- W/D WASHER AND DRYER
- DB DISTRIBUTION BOARD
- ST STORE
- WC WATER CLOSET
- WN WINE CHILLER
- DW DISHWASHER
- AC AIR-CONDITIONER
- RC REINFORCED CONCRETE (EXCLUDED FROM STRATA AREA)
- ☒ VOID SPACE (EXCLUDED FROM STRATA AREA)

0 1 3 6M

ALL PLANS ARE SUBJECT TO CHANGES BY THE RELEVANT AUTHORITIES.
MEASUREMENTS ARE APPROXIMATE ONLY AND SUBJECT TO FINAL SURVEY.
INFORMATION ACCURATE AT POINT OF PRINTING.
BP NO.: A1716-00003-2022-BP01 DATED 15 MAY 2023

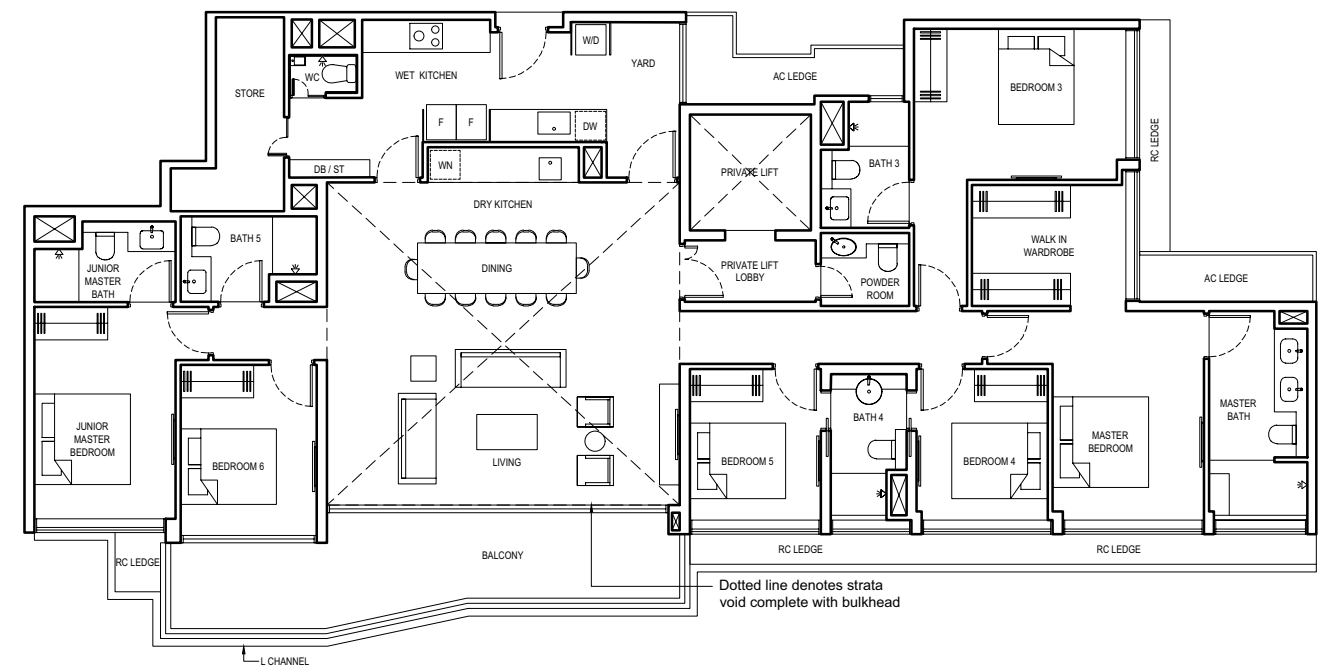


N
KEY PLAN
NOT TO SCALE

PENTHOUSE (GRAND)

TYPE PH-8

285 SQM / 3068 SQFT
(INCLUSIVE OF 18 SQM BALCONY,
9 SQM AC LEDGE,
4 SQM PRIVATE LIFT LOBBY &
48 SQM STRATA VOID)
BLOCK 8 #18-24

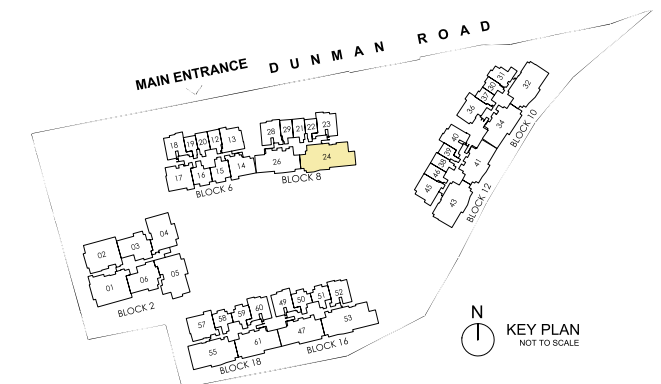


LEGEND:

- F FRIDGE
- W/D WASHER AND DRYER
- DB DISTRIBUTION BOARD
- ST STORE
- WC WATER CLOSET
- WN WINE CHILLER
- DW DISHWASHER
- AC AIR-CONDITIONER
- RC REINFORCED CONCRETE (EXCLUDED FROM STRATA AREA)
- ☒ VOID SPACE (EXCLUDED FROM STRATA AREA)

0 1 3 6M

ALL PLANS ARE SUBJECT TO CHANGES BY THE RELEVANT AUTHORITIES.
MEASUREMENTS ARE APPROXIMATE ONLY AND SUBJECT TO FINAL SURVEY.
INFORMATION ACCURATE AT POINT OF PRINTING.
BP NO.: A1716-00003-2022-BP01 DATED 15 MAY 2023



N
KEY PLAN
NOT TO SCALE